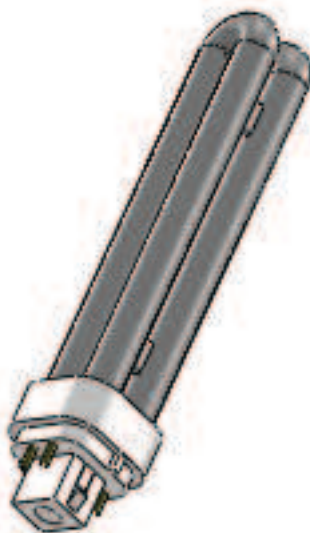
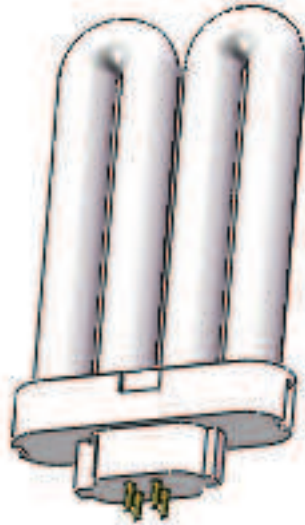


Tube fluorescent compact

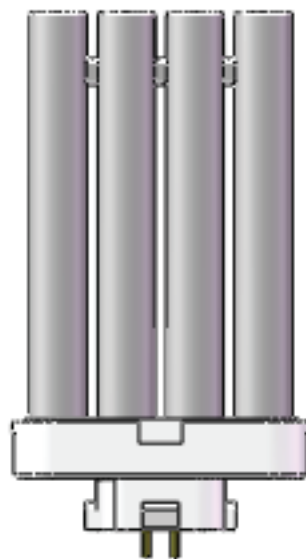
	Puissance	Kelvin	Dimension hors tout	Ø Section tube		Broche	Remarque
A3009-rev1	27 W	6500 K	152 mm	16 mm	T5	4	rev1=rev2
A3009-rev2	27W	6500 K	152 mm	16 mm	T5	4	rev1=rev2
A3003	26 W	6500 K	167 mm	12 mm	T4	4	



A3003



A3009-rev1



A3009-rev2

Tube fluorescent simple

	Puissance	Kelvin	Dimension hors tout	Ø Section tube		Broche
A3007-7	7 W	6500 K	136 mm	12 mm	T4	2
A3007-9	9 W	6500 K	164 mm	12 mm	T4	2
A3007-11	11 W	6500 K	232 mm	12 mm	T4	2
A3072	13 W	6500 K	182 mm	16mm	T5	4
A3024	24 W	6500 K	250 mm	20 mm	T6	4
A3008	13 W	6500 K	172mm	12 mm	T4	4
A3010	18 W	6500 K	232 mm	17 mm	T5	4
A3010H24	24 W	6500 K	315 mm	17 mm	T5	4



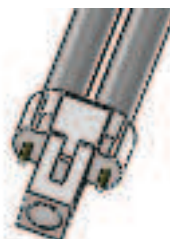
A3007-7

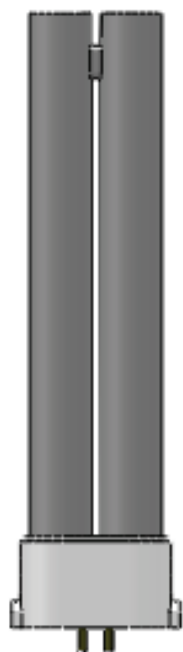


A3007-9

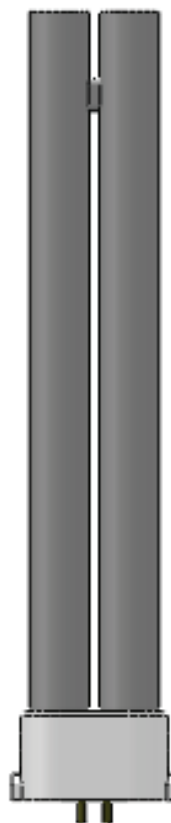


A3007-11

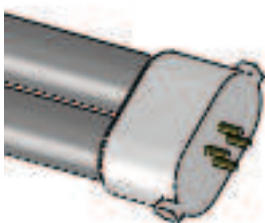


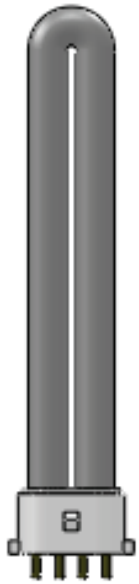


A3072

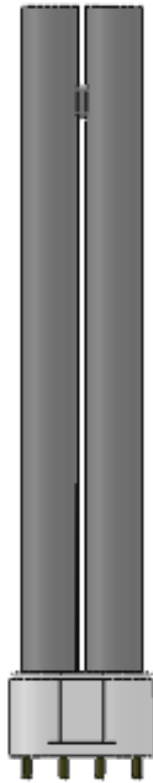


A3024

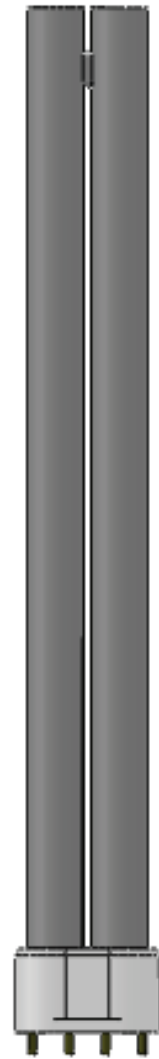




A3008



A3010



A3010H24

